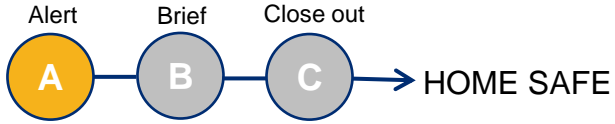
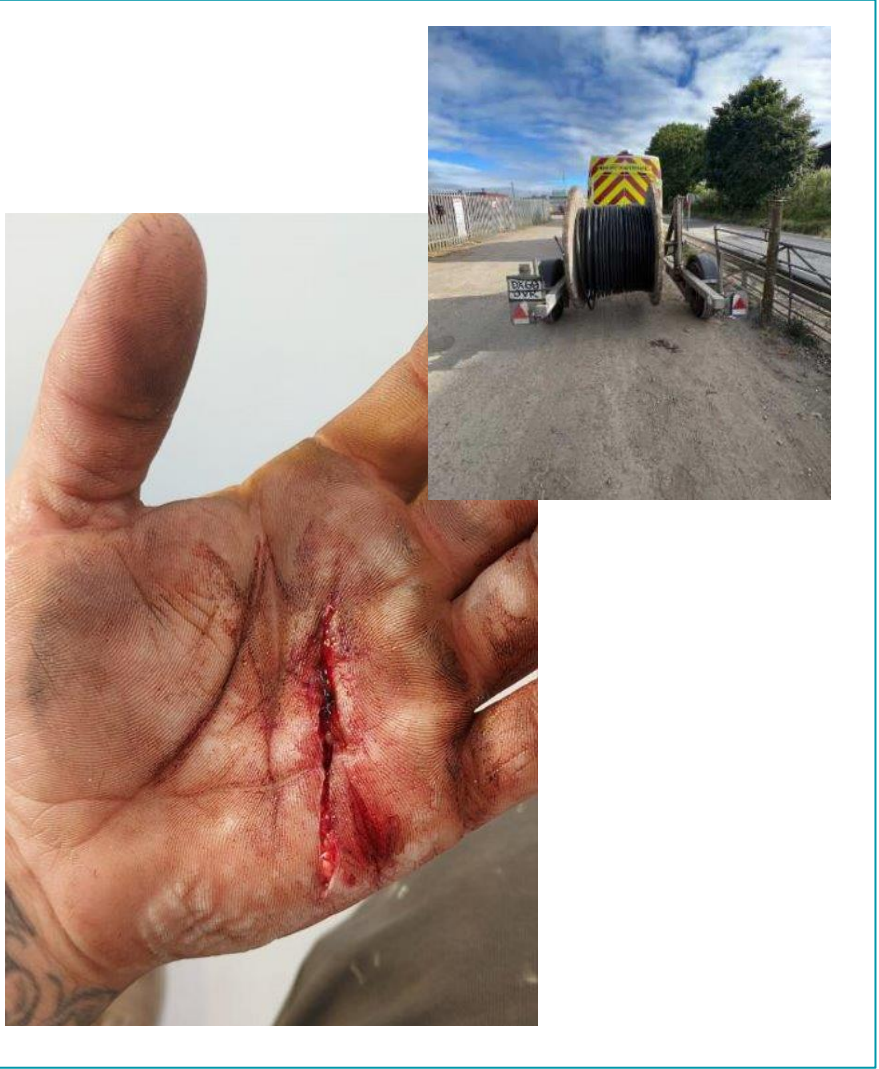


SHE ALERT

Cut to Hand

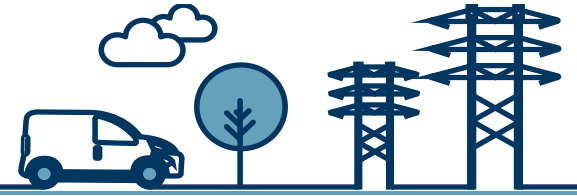
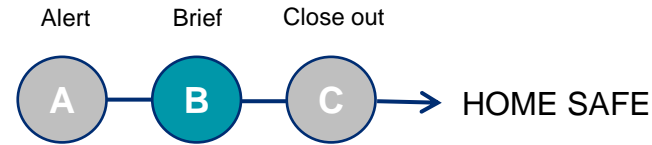


| | | | | | |
|---|----------------------------|----------|-------------|-------------------|------------------------|
| Date of incident | 26 th June 2024 | | Directorate | Distribution SEPD | |
| Region | Ridgeway | Location | Malmesbury | Classification | Lost Time Injury (LTI) |
| What happened ? | | | | | |
| <p>Our contract partner was releasing the cable from a cable drum, which involved cutting the blue rope which holds the cable in place. The IP used a jointers knipex knife to cut the rope, which then came into contact with the hand, causing a cut across the operatives left palm. First aid treatment was carried out immediately on site, before visiting A&E. The IP required 5 days off work for recovery.</p> <p>Things to consider</p> <ul style="list-style-type: none">• Are you using the right tool for the job?• Have you carried out a risk assessment for the task?• Are you wearing the appropriate PPE for the task?• If you do need to use a knife, you should always cut away from yourself | | | | | |



SHE BRIEF

Cut to Hand



Key initial learnings to be shared more widely

What Happened

Our contract partner was releasing the cable from a cable drum, which involved cutting the blue rope which holds the cable in place. The IP used a jointers knipex knife to cut the rope, which then came into contact with the hand, causing a cut across the operatives left palm. First aid treatment was carried out immediately on site, before visiting A&E. The IP required 5 days off work for recovery.

What have we done

An investigation was carried out by our contract partner, supported by SSEN. The investigation showed that a new jointers knife was used for the task, and it appeared the operative wasn't wearing any hand protection. It was also highlighted that it was a very hot day, causing their glasses to steam up, and the team were rushing to complete the job.

Further Actions

- Contract Partner to put a PPE Register in place
- Jointer's knives banned, and replaced with snips

Wider Learnings

- Plan scan and adapt, - carrying out dynamic risk assessments for every task, sometimes the easiest option isn't the safest option
- Always ask yourself, am I using the right tool for the job
- For further information on hand protection please refer to the hand safety SATT - [Safety Awareness Toolbox Talk - Hand Safety \(sharepoint.com\)](#)

