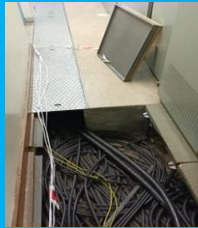


The Incident - What Happened

The use of handmade tooling and the excessive force applied to manually remove cable from a cable trench resulted in a swift release of the cable which caused an engineer to fall backwards against a tile that he had placed behind him resulting in an injury to his back



Causes - Considerations

- The tile cover was removed from the floor and placed too close to the work area, this became a bigger issue when the extraction process changed
- The tile / cover should have been placed further away from the work area
- Multiple cables in the trench placed weight on top of the cables and created an obstruction on the cables that were to be removed
- Engineers must check with the SAP to establish if the extraction of the cable is desirable or essential
- The trench is a small area, limiting access and making it difficult to gain purchase of the cable and secure footing
- The task could have potentially been outsourced to allow specialists to assess the task and extract using specialist equipment would have reduced the likelihood of accident and injury

Lessons Learned - Updated

- Always refer to your Risk Assessment and manual handling training
- Assess your work area before works commence
- Ensure good housekeeping before, during and post any works
- Always wear gloves for grip and consider environmental issue such as dust, water, debris and vermin
- Establish if any obstacles visible or non-visible, will prevent the cable from being extracted
- Establish if obstacles and cable(s) can be removed safely and freely
- If the cable cannot be removed freely consider A or B
 - A Cap off the cable and leave tidy, secure, labelled and report outcome to SAP ensuring drawings are updated
 - B If the cable must be removed to allow the connection of replacement cables, consult the SAP and consider outsourcing cable extraction to specialist who operate specialist equipment to remove safely
- Never apply homemade tooling or excessive force
- Never compromise your footing or any safety.

Always STOP - THINK - CONSIDER

Summary

TILE – Task Individual Load Environment

Always refer to your manual handling training before commencing work and again when changing process

Stop and Think

No job is worth placing you or others at risk of harm, if it's not safe, don't do it

Call it in

Whenever there is an occurrence that did or could have resulted in damage or injury, call it in

Key Contacts:

Brett Parker - Dale Power - Brett.Parker@dalepowersolutions.com

Pete Last – NG – Peter.last@nationalgrid.com