



SAFETY ALERT

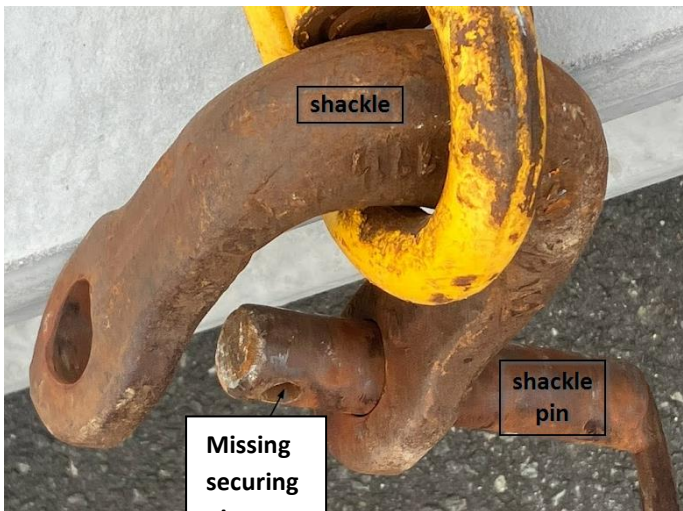


WEL Workers unharmed – standing out of the drop zone

March 2024

During a pole lifting process, a Hiab hook/pin failed, there was no immediate risk of harm due to the work being carried out as per procedure and as intended (taglines used and staff at a safe distance).

A crew were picking up a concrete pole from the Distribution Centre. The pole was attached by swift lifts and chains to the Hiab hook and a tag line was attached to the butt of the pole.



While standing away from the drop zone, the crew started the lifting process. At some point prior to this lift, the shackle-pin holding the hook had worked itself free to the point of failure. The spring clip was not in the shackle-pin.

The outcome was that the pole dropped an estimated 500mm on to the pole pile and behind the steel safety barriers.

Immediate actions

1. The Health and Safety team have started looking for learnings, we have checked all other truck cranes and the pins are present
2. Same day and next day a meetings with them around pins and also how using a safe practice saved us from a worse outcome
3. A review of pin types and what we can do to make them easier to see/audit/check

Initial Recommendations:

1. Replace all securing pins with OEM linch pins, supplied by Palfinger
2. Source a robust bright coloured, reflective flag that attaches to the securing pin
3. Assure WEL crane operators that we have the securing pin most fit for purpose



For further information contact: The WEL Networks Health & Safety Team.