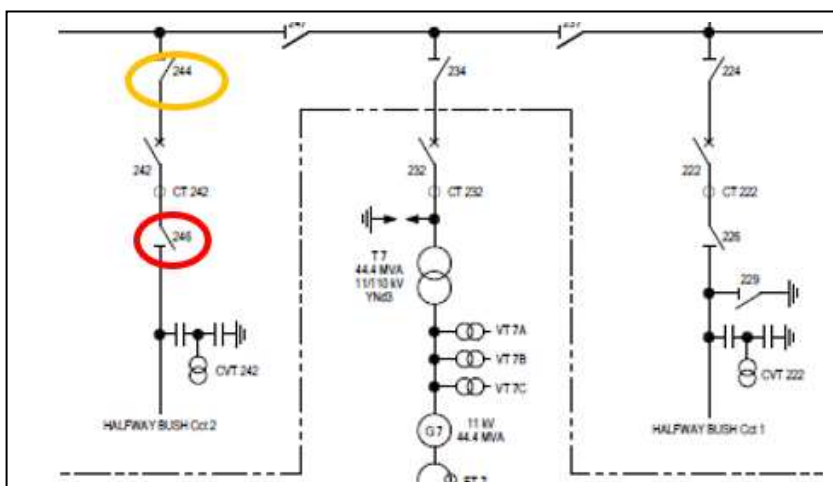




Incorrect Isolation Point Referenced on Permit

WHAT HAPPENED?

An Operator issued the incorrect permit to a lines team. The issued permit was for later in the week when further switching was to take place after maintenance on 246 was completed. The incorrectly issued permit stated 246 was the ROX isolation point (red circled disconnector on SLD). It should have read 244 (orange circled disconnector). The line was also isolated at the HWB end and the error did not pose any danger to the lines team.



A few days later the Maintenance Supervisor picked up the error when they came to site and noticed that the disconnector they were to work on was noted as an isolation point in the “outstanding permits and assurances” folder. They immediately notified the OCR holder and corrected the error.

Although no harm occurred, the incident highlights how distractions and assumptions can compromise critical safety controls.

ROOT CAUSE

- While preparing to issue the permit to the lines team the building security alarm unexpectedly sounded, distracting the Operator. Disruptions and distractions can contribute to people losing focus, potentially leading to errors being made.
- The two permits were almost identical but referenced different disconnectors and dates. The incorrect dates were pointed out to the Operator by the Lines team and were changed on the permit but this did not trigger a “Take 5” by the Operator to find out why they were wrong (complacency).

LEARNINGS

When carrying out safety critical tasks, any time a person is distracted/loses focus, or finds any details on the permit incorrect, they need to stop, take 5 and recheck and confirm all the details are accurate before continuing.

Name	Don Simms
Position	Service Delivery Manager
Mobile	021359124
Email	don.simms@transpower.co.nz
Maximo Ref	176496
Incident Date	18/11/2024