

## During the slewing movement of a truck mounted access platform part of the basket handrail broke off

### What happened?

Due to restricted space around tower ZR 7 the Northfleet team were replacing tension insulators using a Blade truck mounted access platform.

The team were working on the last string of insulators, on the bottom phase, when during a slewing movement there was a loud bang, and the access platform shook violently.

At some point during the slewing movement, the access platform basket had got caught on something, causing the handrail to snap off. The broken handrail fell into the danger zone.

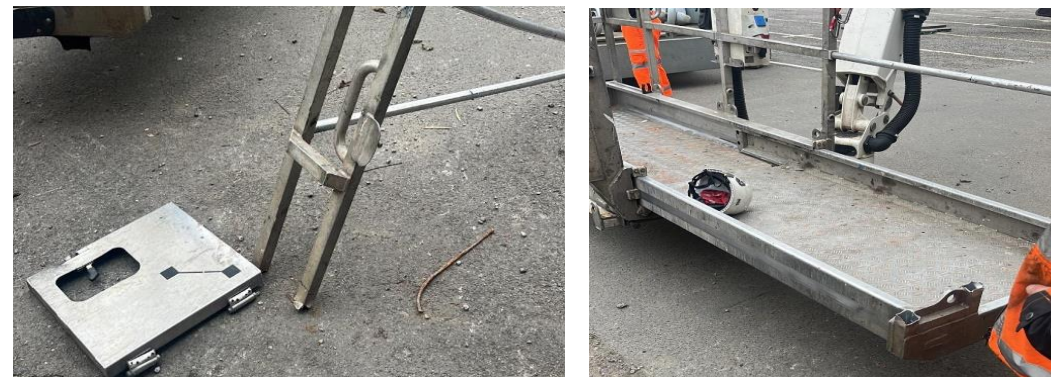
The team believe that it was the chain of the pull lift that got caught on the basket handrail, as this was the only object near the basket.

There were three people in the basket, including the Blade operator. The two linesmen were positioned at the opposite end of the basket to where the handrail broke.

An IMS report has been submitted, awaiting further investigation.

### What you need to do now:

The incident has highlighted the importance of not only being vigilant but also ensuring that personnel are attached to the correct identified attachment points.



<b>Reported date:</b>	11/11/24
<b>Location/site:</b>	OHL Tower ZR 7
<b>Responsible ET dept:</b>	Asset Operations
<b>Principle Contractor:</b>	National Grid
<b>Subcontractor:</b>	Blade Access
<b>Reported by:</b>	Tom Young
<b>Does it relate to a Fatal Risk Group?</b>	Working at Height