

**SAFETY****ScottishPowerExpress****HEALTH & SAFETY MATTERS**

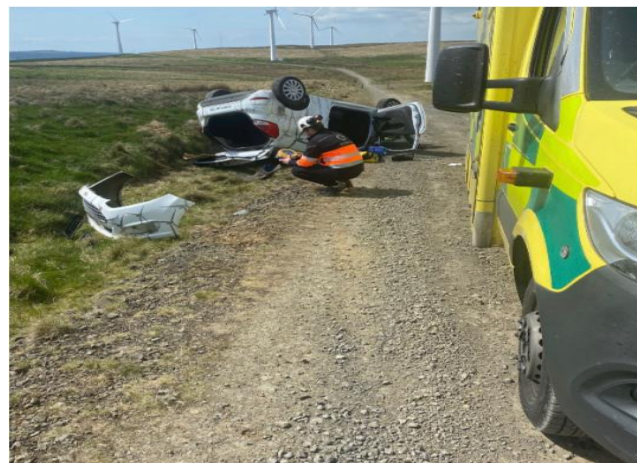
Reference no.: EXP-021-2025

Date: 09/05/25

## Vehicle Incidents

We have unfortunately seen a number of serious vehicle incidents occurring recently on our windfarm operational and construction sites. The incidents have involved staff and contractor vehicles leaving the road and/or overturning. We have been lucky in each of these instances, as the injuries could have been much worse.

There is no justification for speeding on our sites. For you, and our contractors, our personal safety is paramount. Always plan plenty of time for journeys and include the time taken to get off or onto sites. If you are going to be late for a meeting, communicate this before leaving. Do not speed or rush to recover lost time or to get home quicker.



Drivers should be conscious that site roads are graded to support plant movements but as a consequence can be more prone to loss of traction due to the presence of loose stone/gravel. Commercial vehicles, with their heavier engines at the front, can result in the vehicle weight being unevenly distributed. This, and their larger wheels, impact steering capability on slopes and on bends. Car drivers also require to be mindful of the hazards associated with the access roads with potholes, significant ruts and cambers requiring a higher level of awareness and caution.

Driving style should be commensurate with the load and characteristics of the vehicle. Heavy braking, rapid acceleration or harsh steering should be avoided where possible. Drivers should also consider the high likelihood of members of the public, livestock and wildlife being present on our roads.

## Recommendations and action points

- Always ensure the vehicle is appropriate for use on the intended roads and that vehicle checks are undertaken prior to initiating any journey. Ensure any loads are safely secured.
- Obey site speed limits (19mph on operational, and 15 mph on construction sites) just as you would public limits. Remember these are limits and not a target. Note that vehicle trackers do pick up driving speeds and behaviours on site roads too.
- Plan your journey. Consider the weather, light and road conditions, prior to access and egress from site and consider the changes in weather and conditions that could take place on your journey. Is the weather at your destination the same as your start point?
- Do not use your mobile phone whilst driving, always wear your seatbelt and ensure any passengers do too. Drive with due care and attention and be aware of potential for other users (i.e. heavy plant, forestry vehicles) on the road.
- Challenge the behaviour of others. If you see SPR vehicles or contractors speeding on our site roads, please stop them if safe to do so and remind them of your expectations.
- Ensure familiarisation with the driver's handbook

**We think before we act - assess and control the risks**