

What's good for the goose is not good for the gander

IRENE CLAUSSE, ELECTRICAL ENGINEER

Trainer's Forum

6TH May 2025

CHRISTCHURCH

eea

The Orion Group
Orion
connetics
ALL WAYS CONNECTING



About me



How I became an Electrical Power Engineer





1
2
+16+
5x83
25

1 School

- Different school system
- Societal expectations
- Opportunities



2 Study

- Travel and change
- Hospitality
- Decisions



3 Career change

- Failure
- Transferable skills
- Study?



4 Christchurch | Ōtautahi

- Migrating
- Admin life
- Opportunities

4

 Fletcher
Earthquake
Recovery



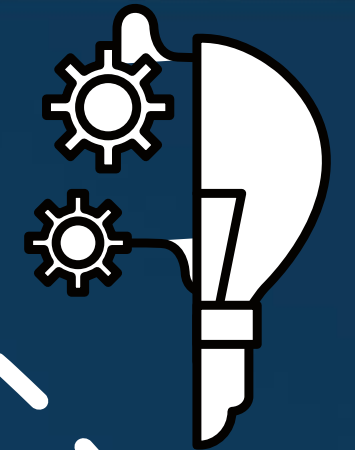
5 Enable

- Technical work
- Networks
- Lateral movement

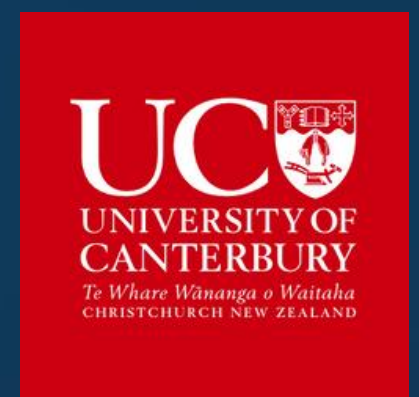


6 University

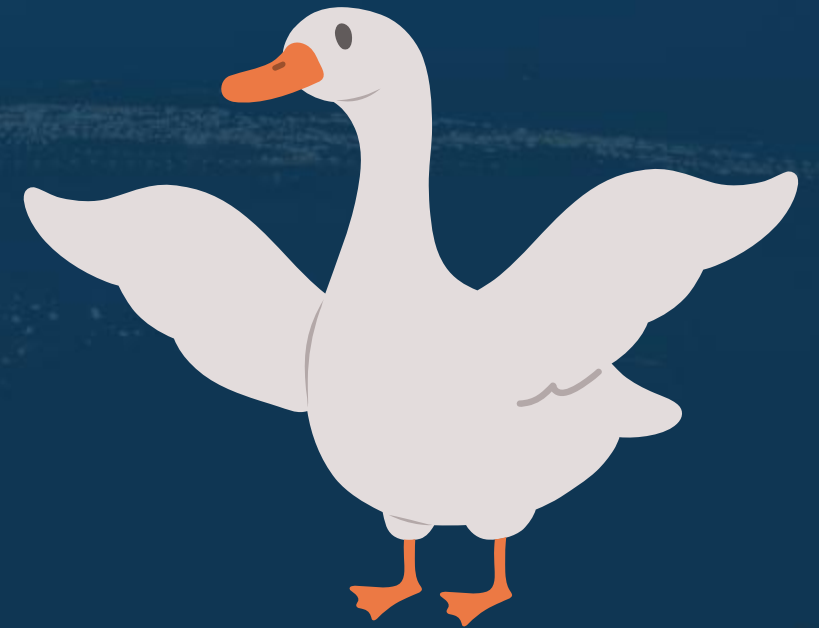
- Engineering
- Belonging
- Optics and perception

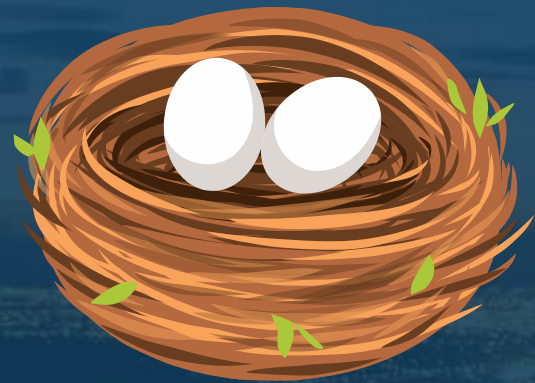


6

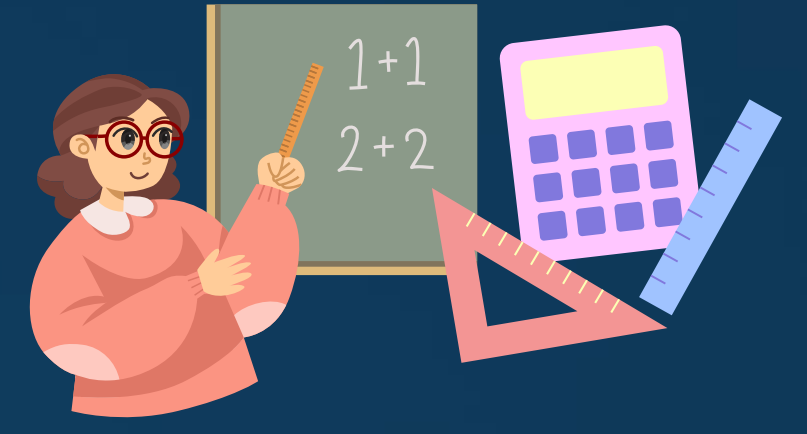


So, where are the geese?







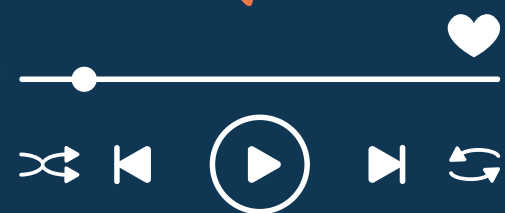
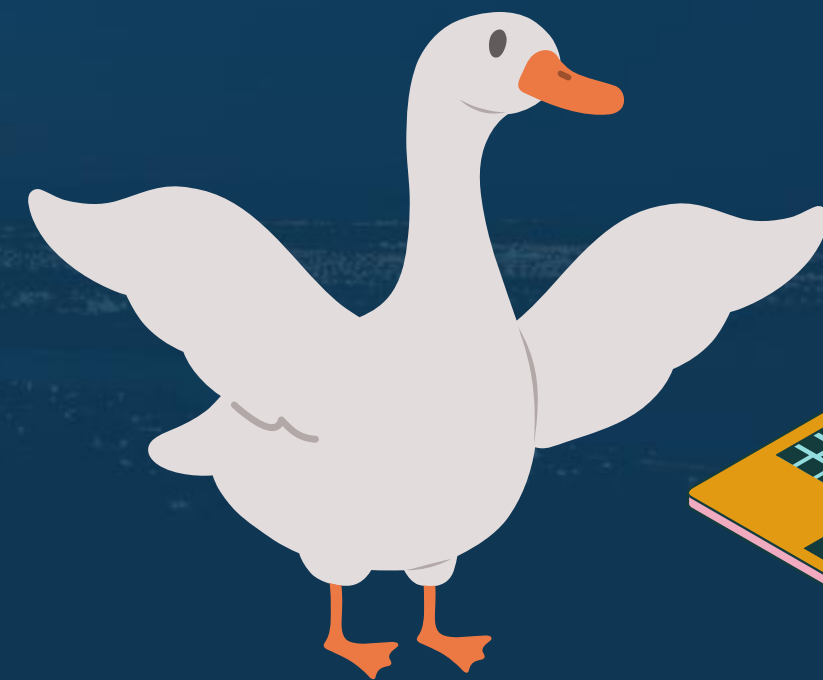
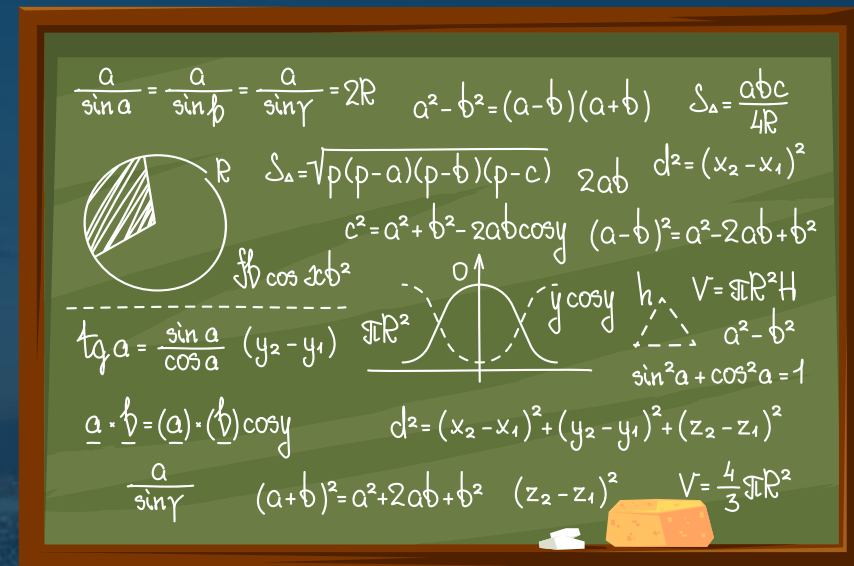




One-size fits all?



Learning styles



The Golden Rule

“Do unto others as you would have them do unto you”



The Golden Rule

“Do unto others as **THEY** would have you do unto **THEM**”



Summary

- **People come from different backgrounds**
- **People have different needs and preferences**
- **Delivering training in a format that is preferred by the trainee can maximise their development**

Thank You