

UVMAXX Mounting Solution for New Zealand

Line Designers Forum
May 2026



Your Trusted Partner in Power Solutions



AUCKLAND | TAURANGA | NELSON | CHRISTCHURCH | SYDNEY | BRISBANE



New Zealand owned & operated

Supporting the
Commercial, Industrial
and Utility sectors.



Technical Powerhouse

In-house Research &
Development.

Trade certified Electrical
Technical Support teams.



Global Partnerships, Local Expertise

Strong ties with Maclean
Power Systems (USA) +
deep local knowledge.



Quality & Reliable Supply

Extensive range of ECL
brands for termination and
cable products.

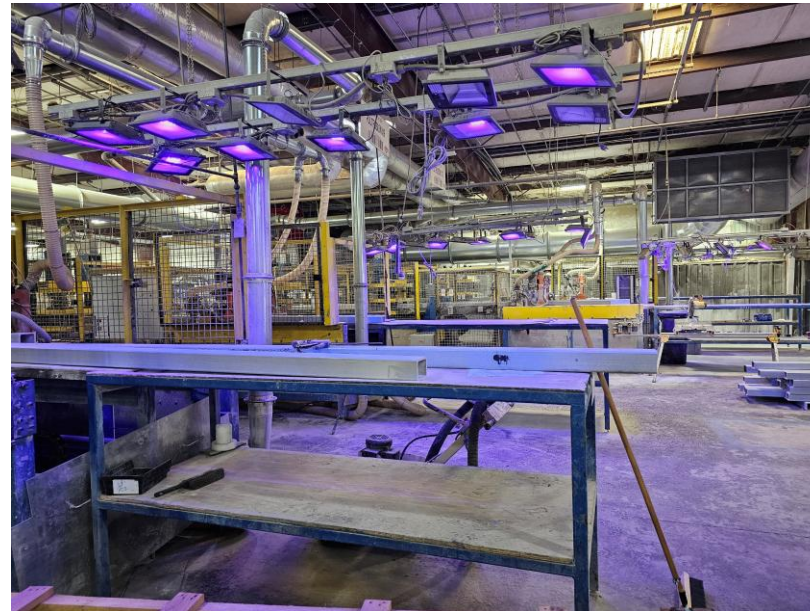
Industry-leading lead times to
meet urgent network needs.

MacLean partnered exclusively with ECL



MPS Newberry, USA is dedicated to manufacturing crossarms and insulated bracketry.

- Capacity: Composite Crossarms – 500k/annum



Bringing the UVMAXX Crossarm to NZ



UVMAXX CROSSARM & HARDWARE SYSTEM

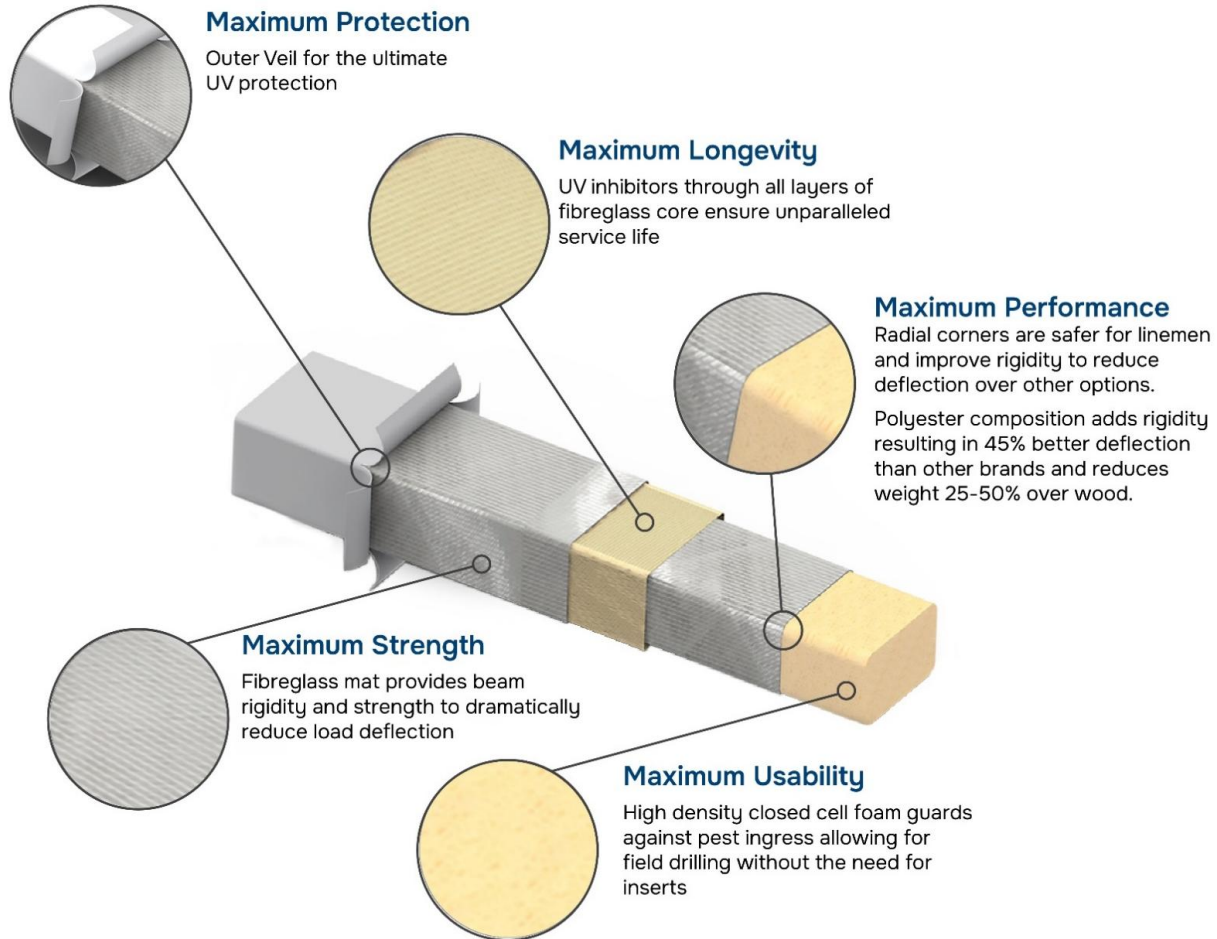
**DURABILITY.
PROTECTION.
PERFORMANCE.**



The new UVMAXX Crossarm lineup sets the industry standard in durability and delivers the longest life product in its category.

We have maximized every element of our foam core cross arm to meet all standards in lab testing and the real world.





- Up to 30% lighter than other composite crossarms
- Drill to networks actual requirements
- UV integrated protection (non-painted)
- 80+ Minimal lifetime degradation
- Robust construction for installation
- Fire resiliency – UL94 VO rated
- Thick walls & closed cell foam-filled
- Non-conductive
- Minimal coefficient of expansion



- ☞ Tested by Scion using Standard AS/NZS 4063.1: 2008 and 3rd point test setup
(which measures Bending strength - MoE_j and apparent modulus of elasticity - MoR_j)
- ☞ Data available to place into Line Design software modelling
- ☞ Meets relevant industry standards



- Cast aluminium
- Fits flat sided & round poles
- Guy strain point incorporated
- 3 strapping points
- Easy to install
- Lightweight
- Corrosion resistant, long life
- Eliminates need for arm braces
- Helps with Electrical Phase to Earth clearances
- Bolts to all pre-stressed concrete pole configurations

Bracket Testing



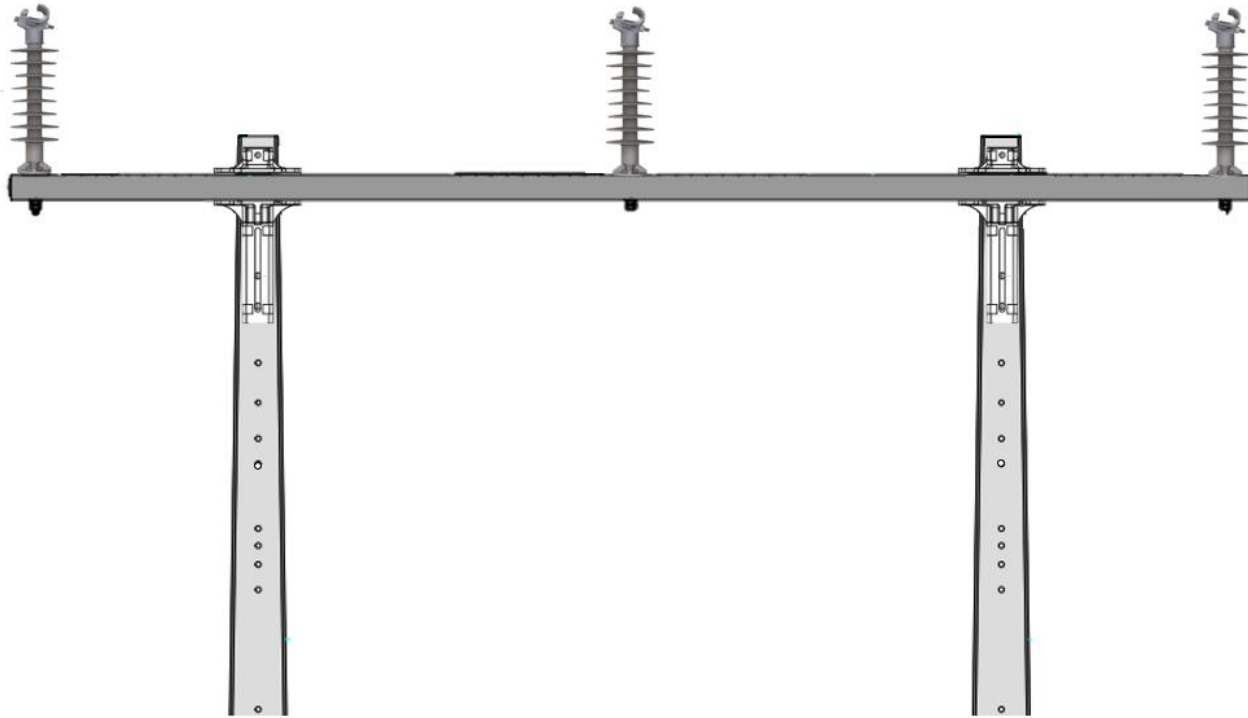
- Tested to find Ultimate Limit state following heat treatment for hardening
- Fits single arm
- Data available to put into design models
- Meets relevant industry standards
- Corrosion resistant
- Allows for crossarm to be customised to network requirements

Suitable for multi-clearance – 11 & 33kV

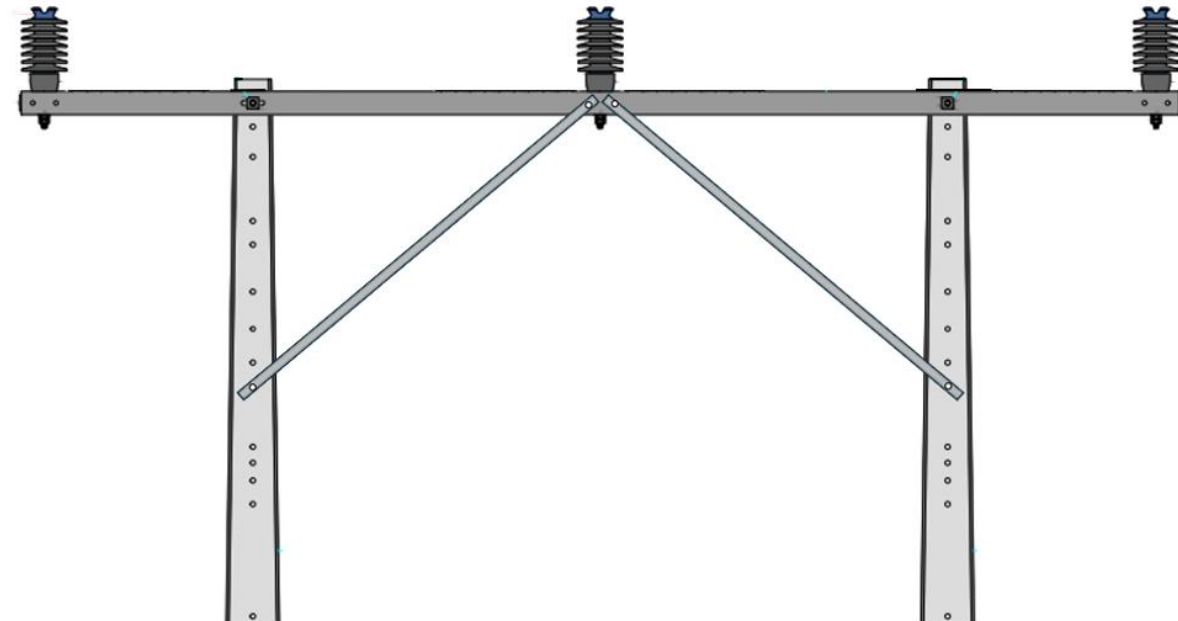


Electrical clearances are greater when you eliminate braces

Crossarm & bracket for H Structures



- Field drillable for ease of installation
- Custom sizes, available up to 6m lengths
- Different wall thicknesses for additional strength

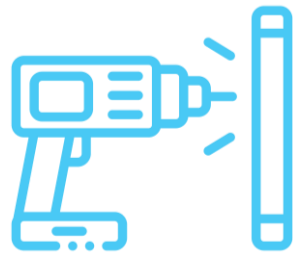




Strength & Reliability

Aluminium Alloy material.

Corrosion resistant.



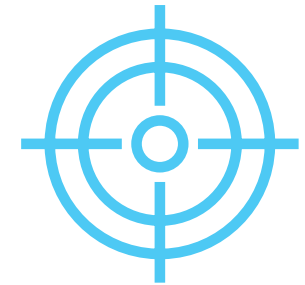
Flexible Mounting Arrangement

Custom solutions that fit all pole arrangements – old and new.



Lightweight

Easier installation and less stress on the pole.



One Solution

One bracket product to suit multiple network design layouts.

Let's Power the Future Together