



FIRST ALERT

Deck of Truck Loose on Chassis Mounts

EVENT

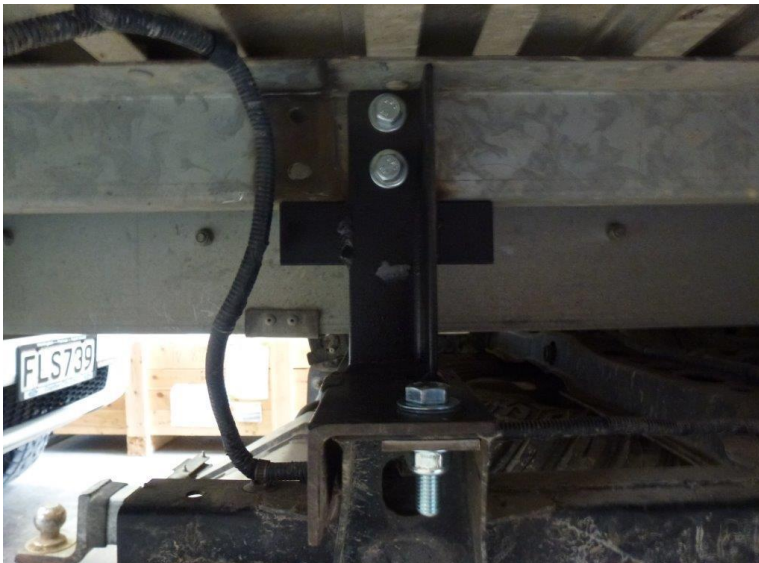
While a vegetation crew were spraying access tracks, the weed spray unit on the back of the flat deck unit lurched forward and the deck became loose on the chassis mounts.

On closer inspection it was found that the rubber bushes and bolts holding the deck onto the chassis were worn, which resulted in the forward movement of the deck.

This movement could affect the handling of the vehicle and also cause the chassis brackets to bend if they were not repaired. Subsequent investigations showed the original brackets were of insufficient strength. They have since been modified.



Underside of Truck Deck



Chassis Bracket



Chassis Bracket

IMMEDIATE ACTIONS

- To replace chassis brackets, with new brackets of sufficient strength
- To check all chassis brackets on additional trucks in fleet