



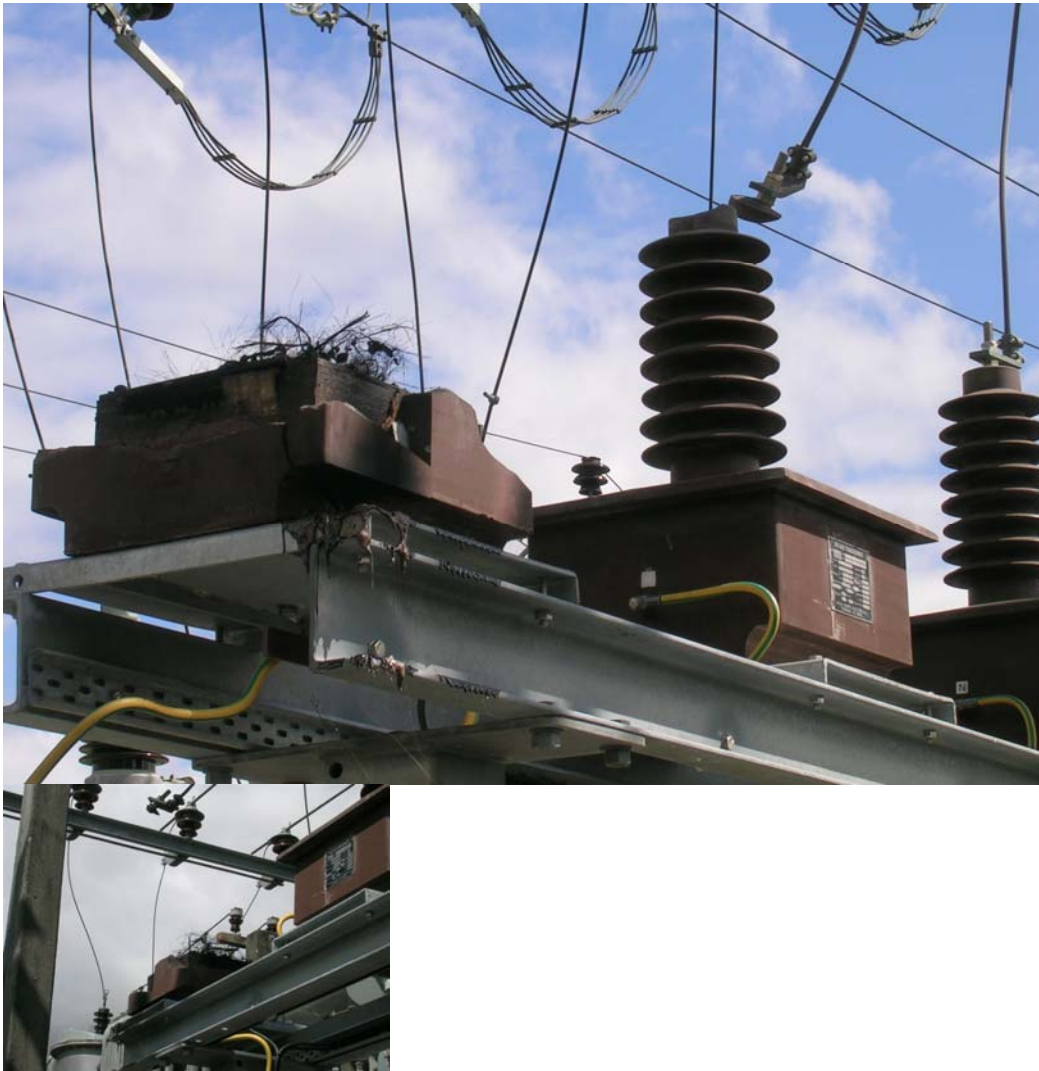
Safety Advice 02-2011 (Jan)(NZ)

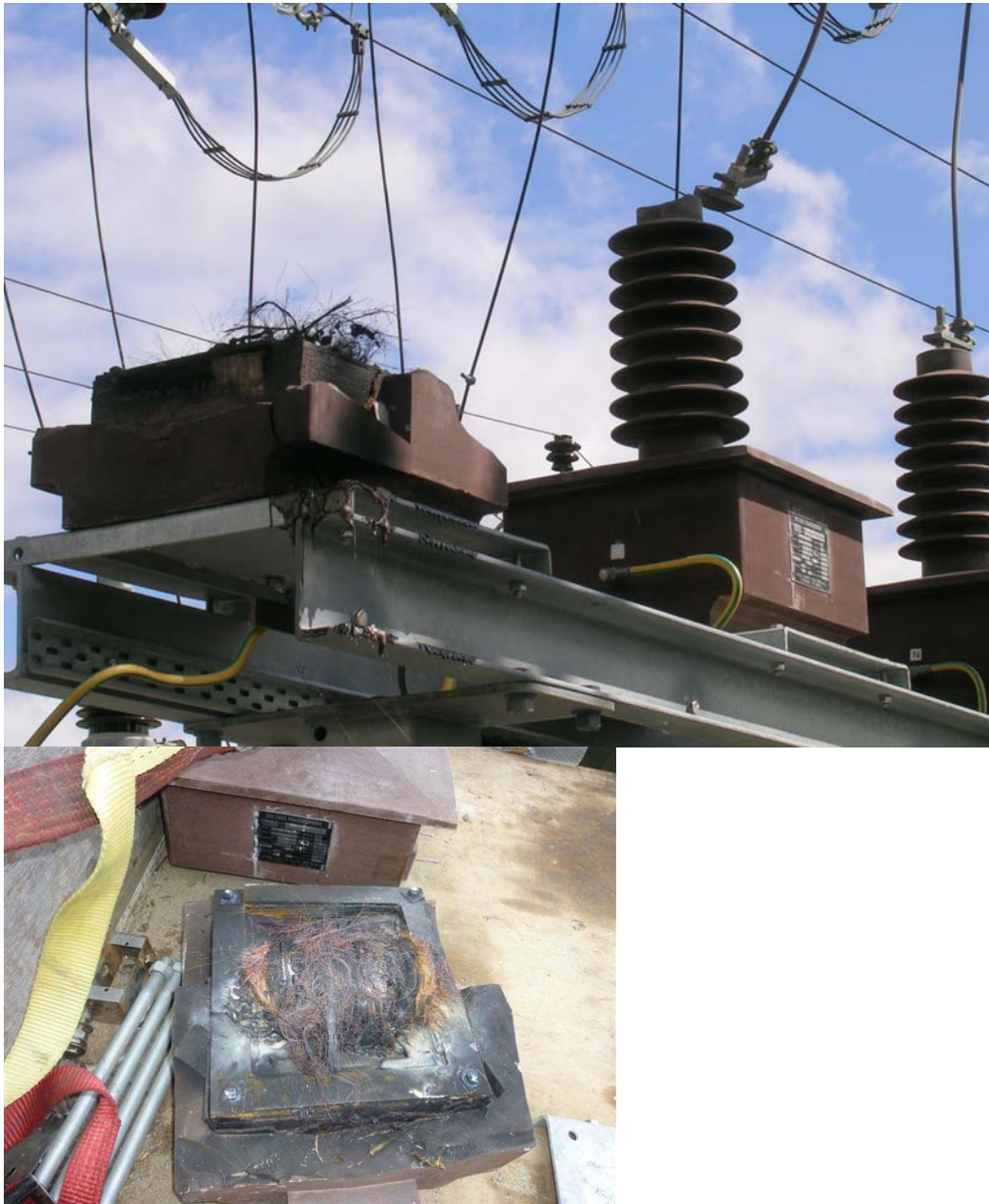
Two Single Phase 33 kV VT Catastrophic Failures

This is to advise that a supply network has experienced two catastrophic failures of single phased 33 kV VT's. The photos included depict these.

The available information is that these were from the same batch, manufactured and purchased in 2008, installed in 2009, and the failures involving lethal force occurring within a year of installation.

See photos below.





+++++