



Safety Advice 14-2013 (May), (NZ)

Safety Advice 14-2013 relates to an incident where a member of the public received an injury (cut above the eye and a hit to the back of the head) which occurred when he came into contact with a conductor which had been lowered across a farm track as part of pole replacement works.

A full outline of the incident follows

+++++



FIRST ALERT

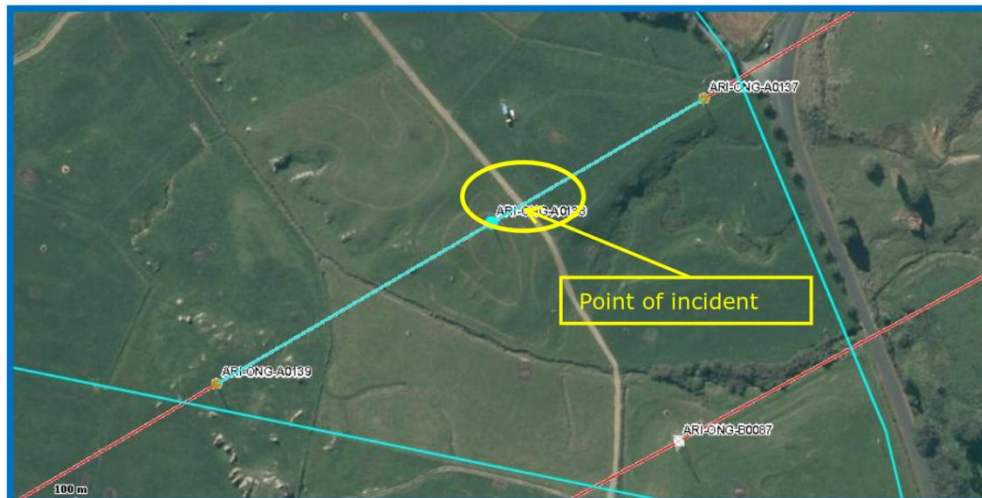
Date: 24 May 2013

INJURY TO A MEMBER OF PUBLIC

EVENT

A member of the public received a head injury (a cut above the eye and a hit to the back of his head) when he came in contact with a conductor which had been lowered across a farm track as part of pole replacement works.

As the Landowner drove up a farm access track the conductor struck the passenger who was standing on the deck of the utility vehicle. The lowered conductor was de-energised. It was, however, unmarked and not managed at the accident site.



IMMEDIATE ACTIONS

- The responsibility of ensuring the safety of the general public at all work sites is critical. Hazards created by the work outside the sphere of the work site must be carefully considered and managed to ensure no one is exposed to hazardous risk, or in the worst case, injured.
- SM-EI Part 1 and Part 2, section 3 - Work and Access Control and SM-EI - 1.406 Safety of persons other than the work party, clearly outline the measure necessary to ensure controls are in place to prevent harm to employees and others in the vicinity of the works.
- **Please review your worksite safety plans to ensure full control measures are in place at all worksites including where works may impact outside the immediate worksite area.**