

Issued to:  
Location:

## SAFETY BULLETIN SB1/2019

### Live 11kV Cable Cut in Error

#### Background

An 11kV switchboard at a 33/11kV site was being replaced. During the circuit transfers a jointer cut into a Live 11kV cable with a reciprocating saw. No Injuries were suffered.

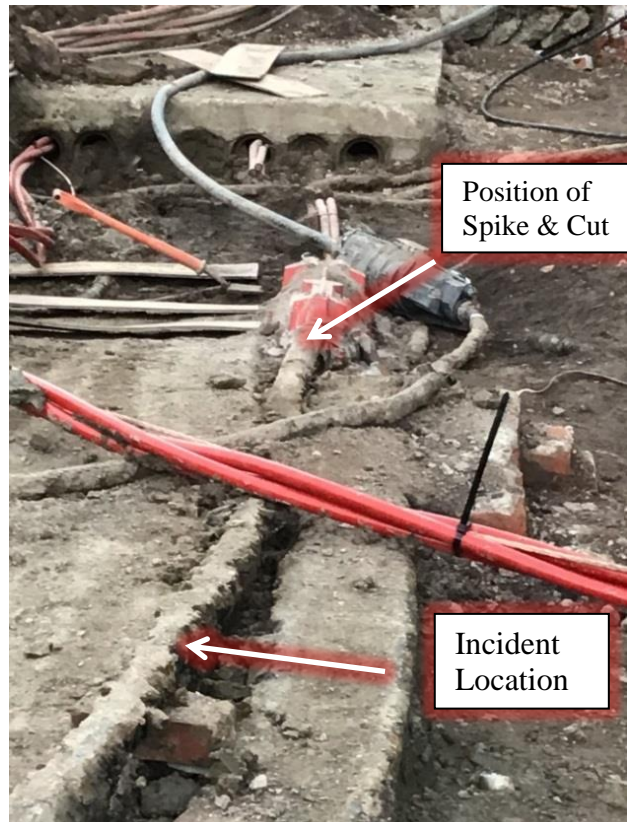
#### What Went Wrong?

A joint pit had been excavated and several 11kV cables had been exposed. Multiple cables were in close proximity to each other. The correct cable to be worked on had been positively identified by the SAP, spiked and cut. A Permit to Work was issued to a jointer to work on the identified and spiked cable.

The jointer chose a convenient position along the length of exposed cable to carry out the jointing work and proceeded to cut the cable at that position with a reciprocating saw.

Between the incident location and the spiking position one of the cables was not uncovered for about 300mm. This cable could not therefore be physically traced along its entire length between the spike position and the proposed cut.

As not all the cables in the vicinity of the proposed work been fully exposed, this led to an assumption that the cable being cut was the correct one.



#### Learning Points

- ST:OS4A states that a cable must be physically traced from the point of work to an already identified point.
- Where any section of cable, however small, cannot be physically traced, a new identification in line with Distribution Safety Rule (DSR) 4.1 and ST:OS4A shall be completed.
- Where reasonably practicable, other exposed cables within the vicinity of the work location should be screened as not positively identified and potentially live.

#### Follow-Up Actions

- DMs shall personally brief relevant staff (TBX 91) and post on Notice Boards
- This Safety Bulletin is issued without prejudice to any investigation being carried out