

Newsflash – 2019 06**16 May 2019 - Internal**

Every employee and contractor, working for Northern Powergrid, should go home at the end of each shift uninjured and in good health after a productive days work

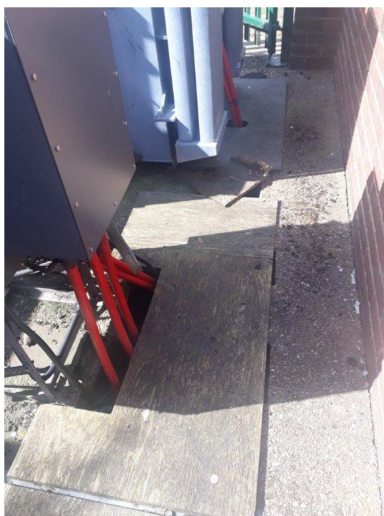
Cable trough cover

Internal and External cable trough and trough covers are present on H.V. and E.H.V. Operational sites across both our license areas. The covers are predominantly of a reinforced concrete, metal, marine grade ply and GRP construction. Structural deterioration of the trough covers is often on the underside and as such a visible inspection is not an adequate assessment for the condition of the covers.

Operational staff are therefore reminded that, in line with our previous guidelines, trough covers should not be subject to foot or vehicle traffic . Before entering a site, Operational staff should risk assess routes within the site to ensure access and egress is via routes that do not involve stepping on trough covers.

We are currently in the process of identifying and rectifying this asset but we are particularly interested in identifying Outdoor Equipment sites fitted with plywood trough covers. (See example below.)

If plywood covers, located in these sites are encountered, they should be reported through our 159 reporting procedure. Missing or misaligned covers that present a trip or falling hazard should also be reported in the same manner.



Plywood cable trough covers