



020-F095-WMS

# QSET – Preliminary Incident Alert

(Quality, Safety, Environment and Traffic Incident Alert)

Alert No: 145

Date: 04/08/16

Please select one

Quality

Safety

Environment

Traffic

## Failure of EWP Jib Ram Pin

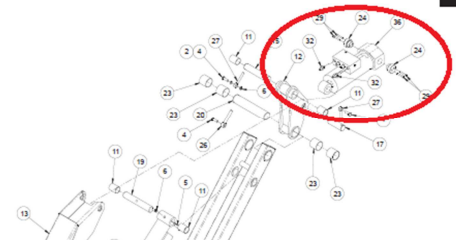
### Photographs



Jib Boom Assembly			
Item	Part No.	Qty.	Description
1	056021-006	4	WSHR LOCK M8 DIN 127
2	056021-010	1	WSHR LOCK M10 DIN 127
3	056021-012	8	WSHR LOCK M12 DIN 127
4	056060-030	4	HHCS M10 X 1.5 X 30 G8.8 DIN 931
5	056060-060	3	HHCS M10 X 1.5 X 60 G8.8 DIN 931
6	056064-008	5	NUT HEX M8-1.25 GR 10.9 SELF LOCKING DIN 985
7	056064-024	1	NUT HEX M24-3.0 GR 10.9 SELF LOCKING DIN 985
8	058491-012	4	HHCS M6 X 1 X 12 G8.8 ISO 4017 DIN 933
9	058494-035	8	HHCS M12 X 1.75 X 35 G8.8 ISO 4017 DIN 933
10	062642-024	2	BEARING SLEEVE
11	062642-025	6	BEARING SLEEVE

CONTINUED ON NEXT PAGE...

Repair Parts



### Incident Details

A worker fitted his harness and attached his lanyard to the anchor point then began to raise the EWP basket when the basket uncontrollably tilted forward striking the ground. The basket was 2.5 m off the ground at the time of the failure; he remained in the basket and has escaped with a minor bruising to his hand and hip. The unit is a Snorkel EWP A46JRT. The project has inspected the other Snorkel A46JRT unit that is on site and found the same component to have significant wear.

### Casual Factors

The jib ram stepped pin locking bolts (29) broke due to shear/rotation force and both of the stepped pins (24) subsequently came out. The mounting area for this is inside the main boom and is hidden/captured until it is extended. Once the stepped pins came out, picture above, it had only one pivot point and allowed the basket to fall with gravity like in this instance.

A mechanical investigation is underway with the maintainer and manufacturer of the unit.

### Immediate Actions

- Stood all Snorkel EWP's down and conducted an inspection of the jib ram pins
- Inspect a cross section of other brand and type EWP unit's ram pins for damage
- Contacted manufacturer (Snorkel) and maintainer of unit to commence joint mechanical investigation of failure